

Faraday House Aurora Gardens

, London, SW11 8ED

£3,200 Per month

This apartment is located on the sixth floor of Faraday House, the first phase of the exciting Battersea Power Station development, which is due for completion shortly. The one-bedroom property has contemporary bespoke interior design throughout.

The famous icon is located on the river in the heart of central London, just a five minutes' walk from the Houses of Parliament and is part of a wider regeneration initiative that will transform the Battersea/ Nine Elms area over the next few years. With parkland stretching down to Vauxhall as well as a range of shops, bars, restaurants and cafes, there will be many aspects to enjoy.

- 1 Double Bedroom
- Modern Bathroom
- Fully-Fitted Kitchen
- Large Balcony
- Furnished

Viewing

Please contact us on 020 3198 4517 if you wish to arrange a viewing appointment for this property or require further information.



1



1

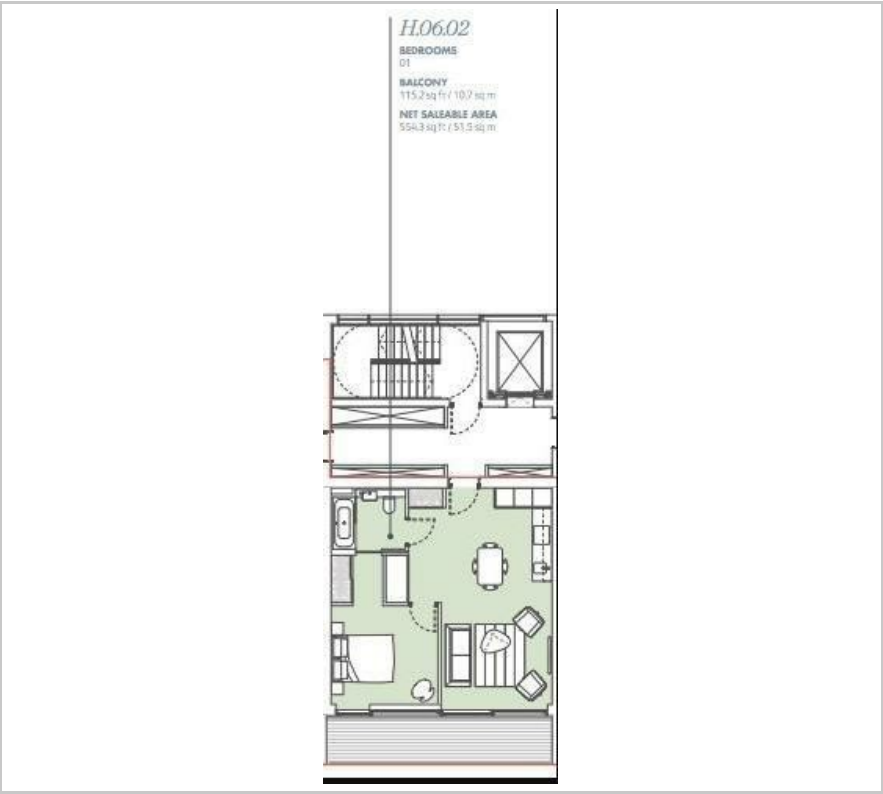


1

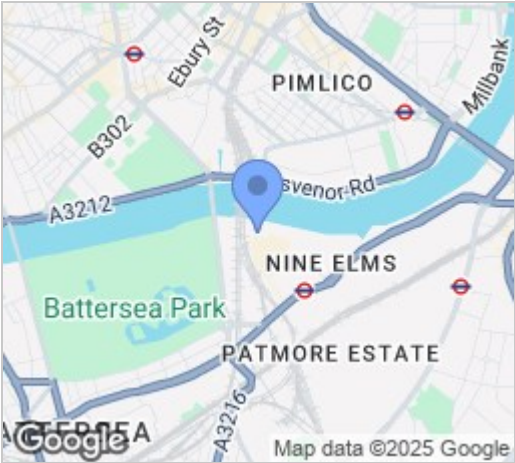


C

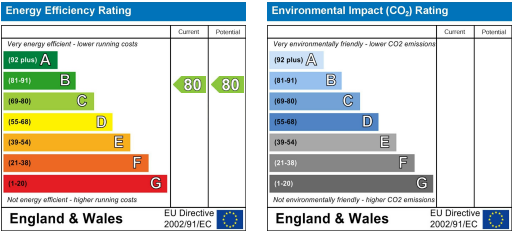
Floor Plan



Area Map



Energy Efficiency Graph



These particulars, whilst believed to be accurate are set out as a general outline only for guidance and do not constitute any part of an offer or contract. Intending purchasers should not rely on them as statements of representation of fact, but must satisfy themselves by inspection or otherwise as to their accuracy. No person in this firms employment has the authority to make or give any representation or warranty in respect of the property.